

Enterprise Consulting Assignment Lifecycle

Each Enterprise Consulting Assignment steers its owners through seven well defined steps. Each step ensures assignment owners gain access to the appropriate intellect, on-demand tools and collaboration capabilities to complete a comprehensive, effective and valuable consulting assignment.

Step 1: Assignment Creation

The creation of an Enterprise Consulting Assignment can be completed within five minutes with a valid user account and Internet access. The creation process determines which preconfigured intellect, on-demand tools and collaboration capabilities are leveraged throughout the assignment lifecycle. This configuration ensures organisations effectively identify performance improvements by reducing risk, establishing and promoting best practices, and eradicating operational and commercial weaknesses.

These performance improvements are achieved through the unique way in which Monetical combines your historical experience, with its own preconfigured capabilities and intellect, enabling real time evaluation of your enterprise.

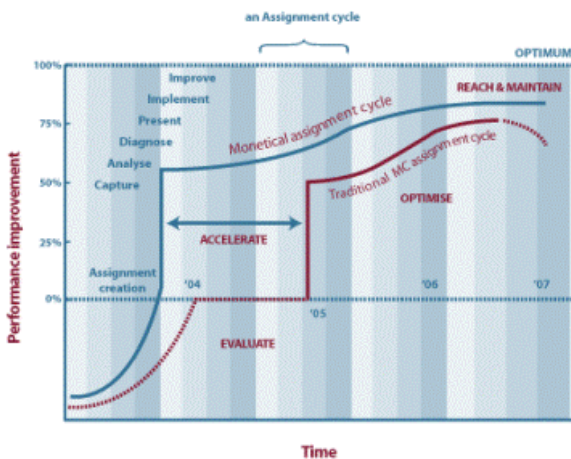
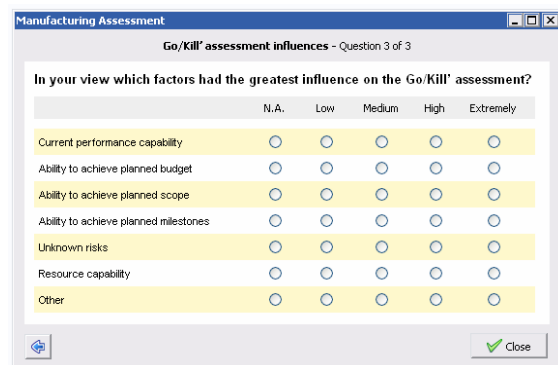


Figure 1 – Assignment Life Cycle

Step 2: Capture

Monetical captures and manages all the appropriate operational and commercial data for 10 key factors that influence performance. Data is gathered at a number of appropriate phases within a consulting assignment life cycle.

Data for each assignment is entered via a simple web interface, through application integration or by completing a questionnaire.



	N.A.	Low	Medium	High	Extremely
Current performance capability	<input type="radio"/>	<input type="radio"/>	<input type="radio"/>	<input type="radio"/>	<input type="radio"/>
Ability to achieve planned budget	<input type="radio"/>	<input type="radio"/>	<input type="radio"/>	<input type="radio"/>	<input type="radio"/>
Ability to achieve planned scope	<input type="radio"/>	<input type="radio"/>	<input type="radio"/>	<input type="radio"/>	<input type="radio"/>
Ability to achieve planned milestones	<input type="radio"/>	<input type="radio"/>	<input type="radio"/>	<input type="radio"/>	<input type="radio"/>
Unknown risks	<input type="radio"/>	<input type="radio"/>	<input type="radio"/>	<input type="radio"/>	<input type="radio"/>
Resource capability	<input type="radio"/>	<input type="radio"/>	<input type="radio"/>	<input type="radio"/>	<input type="radio"/>
Other	<input type="radio"/>	<input type="radio"/>	<input type="radio"/>	<input type="radio"/>	<input type="radio"/>

Figure 2 – Assignment audit form

Step 3: Analyse

Monetical patent pending analytical capabilities unite current and historical data to provide unrivalled insight into enterprise performance. This key data is analysed in real-time, enabling identification of performance capabilities across the entire value chain.

Step 4: Diagnose

Diagnosis of the factors that influence performance is possible due to Monetical on-demand tools:

Scenario Management

Creating multiple scenarios based on various performance factors, allows the optimal balance between cost, risk and capability to be achieved.

Root-Cause Analysis

The preconfigured cause and effect application ensures that the reasons for enterprise variations are diagnosed. Consulting assignment owners are rapidly guided through a series of potential reasons, leading to the clear identification of the root-cause. Monetical ties together all the associated costs with the root-cause to help focus future performance improvement requirements.

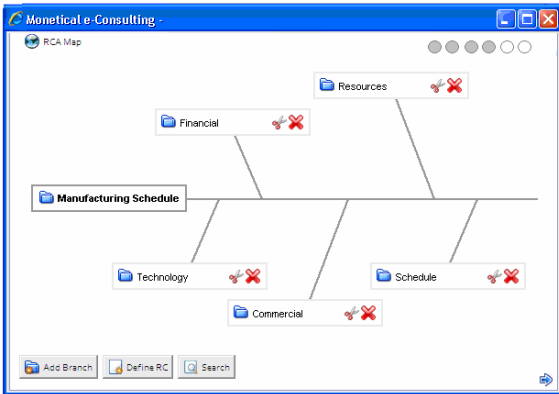


Figure 3 – On-demand Cause and Effect Analysis

Performance Influence Reports

At each important stage within a given consulting assignment, Monetical unique statistical analysis capabilities provide real-time diagnosis of the current factors influencing performance. This enables consulting assignment owners to take immediate action to improve performance.

Best Practice Repository

Monetical preconfigured knowledge repository is constantly enhanced, both by you and as part of Monetical future product releases. This continuous improvement process enables consulting assignment owners to benefit from the experience of others through the identification of best practices.

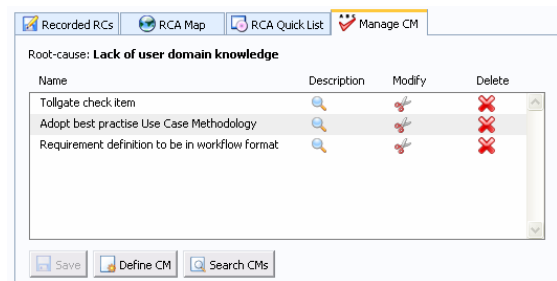
Step 5: Present

All the information gathered and analysed throughout a consulting assignment is clearly available to all owners, members and stakeholders. Performance factors are clearly presented in the form of tables, graphs, and charts. These display past, current, and projected performance capability, in addition to key influences. This information can be viewed on-screen, printed, exported (e.g. spreadsheet) or compiled as part of a consulting assignment report.

Step 6: Implement

The dynamic presentation of performance information throughout the consulting assignment lifecycle enables the alignment of real-time improvements with long-term enterprise changes.

Close monitoring of your enterprise performance capability as corrective measures are implemented helps you accurately track return on investment, calculate performance gains and promote best practices.



Name	Description	Modify	Delete
Tollgate check item			
Adopt best practise Use Case Methodology			
Requirement definition to be in workflow format			

Figure 4 – Preconfigured corrective measurements

Step 7: Improve

Traditional consulting approaches inevitably see a decline in performance gains, due to the continual change in operational and commercial environments. With Monetical, consulting assignment owners can re-run assignments to:

- retain an optimum level of performance
- accurately benchmark performance gains in response to implemented changes

Monetical ensures the experience gathered on a daily basis is retained for your future benefit. Unlimited access to all the associated intellect, data and applications allows benchmarking between project types, departments, and organisations. This drives performance improvement across your entire value chain.