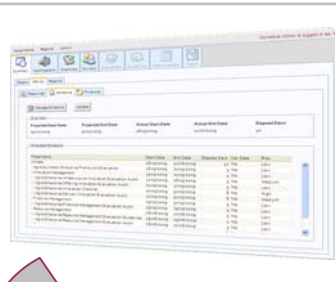


**Programme Set-up**

Provide Monetical team with a completed programme resource schedule, i.e. names, emails & positions using the template.xls supplied. Monetical team will complete the health check programme set-up remotely.



**Benchmark Audits**

Each benchmark audit consist of approx 15 questions that require the recipient to respond to a statement with a range of response options, e.g. 'In my view, we are encouraged to take risk?' Response = Completely Disagree through to Completely Agree'

**Check List Audits**

Each check list audit consist of approx 10 items that require the recipient to verify whether the organisation is currently performing the task, e.g. 'We have a policy of producing all specifications in English'. Response = Yes or No

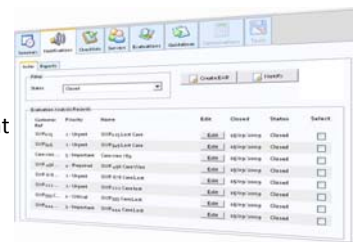
**Benchmark Audits**

Series of predefined audits that benchmark programme characteristics against current industry best practises, will be circulated via Email. Individuals will be given 3 days to complete. Approx 10 minutes per audit. 10 in total.



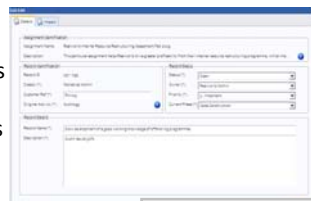
**Check List Audits**

Series of predefined check lists that measure certain programme characteristics against current industry best practises, will be circulated via Email to specific individuals, who will be given 3 days to complete.



**Evaluation Record**

Monetical will create individual performance evaluation records for all responses that demonstrate the organisation is not meeting the industry's minimum level of performance.



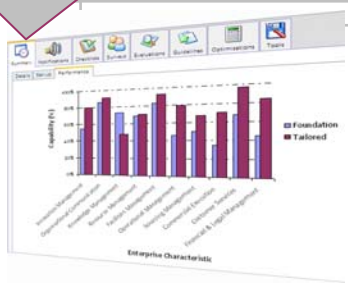
**Root Cause Analysis**

A root-cause analysis tool will be used during a collaborative analysis session to accurately identify the underlying enterprise performance weakness.



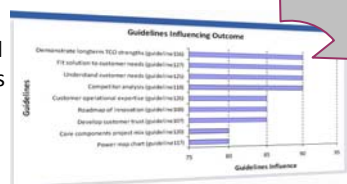
**Capability Report**

Provides an accurate assessment of the organisation's current performance capability with respect to their adoption of industry best practices.



**Best Practice Guidelines**

A review and selection of the preassigned best practices will be undertaken to help address diagnosed process, resource and application weaknesses (root causes) and ultimately reduce risks.



**Publish Improvement Plan**

Monetical will provide senior managers and stakeholders with a qualified and quantified description as to where future enterprise investment should be made to enhance the organisation's overall performance capability.

